



## 'Art' Print Collection from Ellen McKenna in collaboration with Emily Ziz

A Bold and colourful collection of prints for coloured inspired interiors



### ABOUT THE COLLECTION

Artist and designer, Ellen McKenna has come together with residential and commercial decor supplier, Emily Ziz to create the 'Art' collection. The collection features twelve bold designs, each featuring multiple colourways, with all prints available across an extensive range of decorative materials, including fabrics, wallcoverings, glazing solutions, solid finishes, and acoustic products.

The collection consists of both painterly and graphic style prints with all works evolving from Ellen's original artworks on paper and canvas.

Making use of Ellen's distinctive colour infused artwork, the 'Art' collection is adventurous, joyful and just a little bit vintage in flavour.

## ABOUT ELLEN MCKENNA

### **Long bio**

Ellen McKenna is a Melbourne based pattern designer and artist. Ellen's work started with a modernist aesthetic, featuring textured line works, abstract spots and bold shapes but has developed to include a more expressionistic style created with paint. Ellen uses her art and pattern work as creative expression with a focus on colour, shape, playfulness and balance. Inspired by multidisciplinary design elements from the early to mid-20th Century, Ellen's aesthetic is also shaped by her lifelong study and love of the arts which includes graduating with a degree in Visual and Performing Arts from the Victorian College of the Arts.

Ellen's work has, so far, been featured in products by fashion, textile and home wares clients, such as Kablooi, Elm Lifestyle, Chester Street Clothing, Foxwood Clothing, Tokoencit, Little and Kind, Nerida Hansen Textiles, Cotton ON, Soxy Beast and a recent collaboration with the **Melbourne Symphony Orchestra**.

Ellen also produced a month-long exhibition 'From Art to Fashion' which was hosted by the Town Gallery in Hawthorn and featured her art and textile designs.

Ellen was also shortlisted as a finalist and awarded a commendation in the recent The Design Files + Laminex - Design Awards in the category of Textile Design.

### **Short Bio**

Ellen McKenna is a Melbourne based designer and artist. Ellen uses her art and pattern work as creative expression with a focus on colour, shape, playfulness and balance. Ellen's aesthetic is also shaped by her lifelong study and love of the arts which includes graduating with a degree in Visual and Performing Arts from the Victorian College of the Arts.

[www.ellenmckenna.com](http://www.ellenmckenna.com)



Head Shots - Megan George Photography

## ABOUT EMILY ZIZ

Emily Ziz is a supplier of high performance digitally printed products to the interior design and architecture industry. The studio is known for its constant innovation and unique ability to translate design concepts across an extensive range of decorative materials, including fabrics, wall coverings, glazing solutions, solid finishes and acoustic products. Catering to both the commercial and residential markets, Emily Ziz work collaboratively with specifiers on projects of any scale, to deliver the highest quality product with short production lead times, and the assurance of a completely bespoke outcome.

[www.emilyziz.com](http://www.emilyziz.com)

'Art' Collection Link

[www.emilyziz.com/print-catalogue/art](http://www.emilyziz.com/print-catalogue/art)

## OPTION FOR SHORT TEXT FOR IMAGE MENTION

'Art' print collection from Ellen McKenna + Emily Ziz collaboration. More information visit [www.ellenmckenna.com/interior-trade](http://www.ellenmckenna.com/interior-trade)

FULL PRINT COLLECTION



Before Summer Blue, Green and White

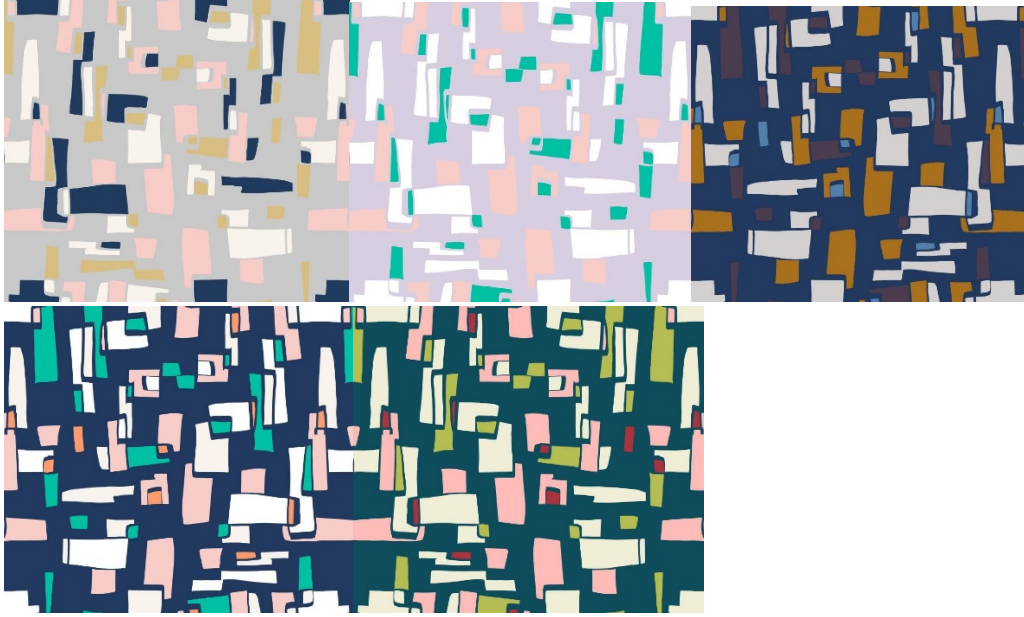


Blue Skies Blue, Natural and Terracotta



Broken Hearts Blue, Green and Terracotta





Connected Grey, Lilac, Moody, Navy, Green



Crystalline Dark and Grey



Deep Water Blue, Mint and Yellow



I'm Going this Way Blue, Grey and White



Looking at it from Here Dusky, Grey and Teal



Midnight Gold, Muted and Sage



Mountain Blue, Green and Yellow





Rabbits and Boats Blue, Cream, Green and White



Sunny Side Neon, Purple Peach, Swinging and White



## IMAGES

Please note: Full Selection of High Resolution – Print Ready Images can be downloaded and saved from the link below:

<https://www.ellenmckenna.com/art-interior-design-collection-with-emily-ziz>

All photography credits – Kirsten Bresciani

<http://kirstenbresciani.com.au/>









